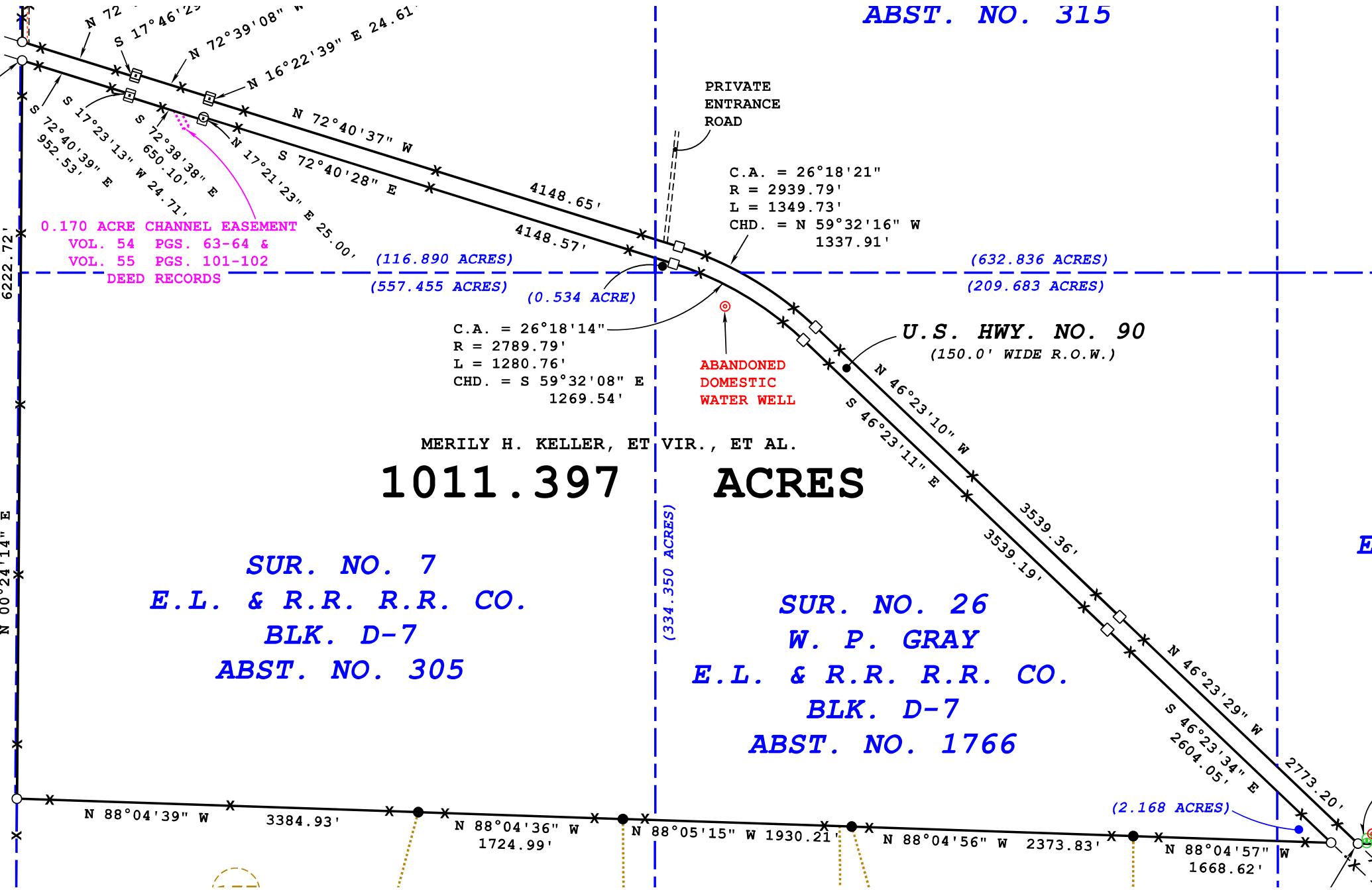


**ABST. NO. 315**



**0.170 ACRE CHANNEL EASEMENT**  
 VOL. 54 PGS. 63-64 &  
 VOL. 55 PGS. 101-102  
 DEED RECORDS

PRIVATE  
 ENTRANCE  
 ROAD

C.A. = 26°18'21"  
 R = 2939.79'  
 L = 1349.73'  
 CHD. = N 59°32'16" W  
 1337.91'

(116.890 ACRES)  
 (557.455 ACRES)

(632.836 ACRES)  
 (209.683 ACRES)

C.A. = 26°18'14"  
 R = 2789.79'  
 L = 1280.76'  
 CHD. = S 59°32'08" E  
 1269.54'

ABANDONED  
 DOMESTIC  
 WATER WELL

**U.S. HWY. NO. 90**  
 (150.0' WIDE R.O.W.)

MERILY H. KELLER, ET VIR., ET AL.

**1011.397 ACRES**

**SUR. NO. 7**  
**E.L. & R.R. R.R. CO.**  
**BLK. D-7**  
**ABST. NO. 305**

**SUR. NO. 26**  
**W. P. GRAY**  
**E.L. & R.R. R.R. CO.**  
**BLK. D-7**  
**ABST. NO. 1766**

N 00°24'14" E

(334.350 ACRES)

(2.168 ACRES)

N 88°04'39" W 3384.93'  
 N 88°04'36" W 1724.99'  
 N 88°05'15" W 1930.21'  
 N 88°04'56" W 2373.83'  
 N 88°04'57" W 1668.62'