

NEWBY HILLS RANCH NORTH

EDWARD EARWOOD DEED VOL. 91, PG. 423

SUR NO. 149 C.C.S.D. & R.G.N.G. RR. CO. ABS NO. 749

EDWARD EARWOOD EXCHANGE DEED VOL. 387, PG. 1242

SUR NO. 156 J. PUTMAN ABS NO. 1814

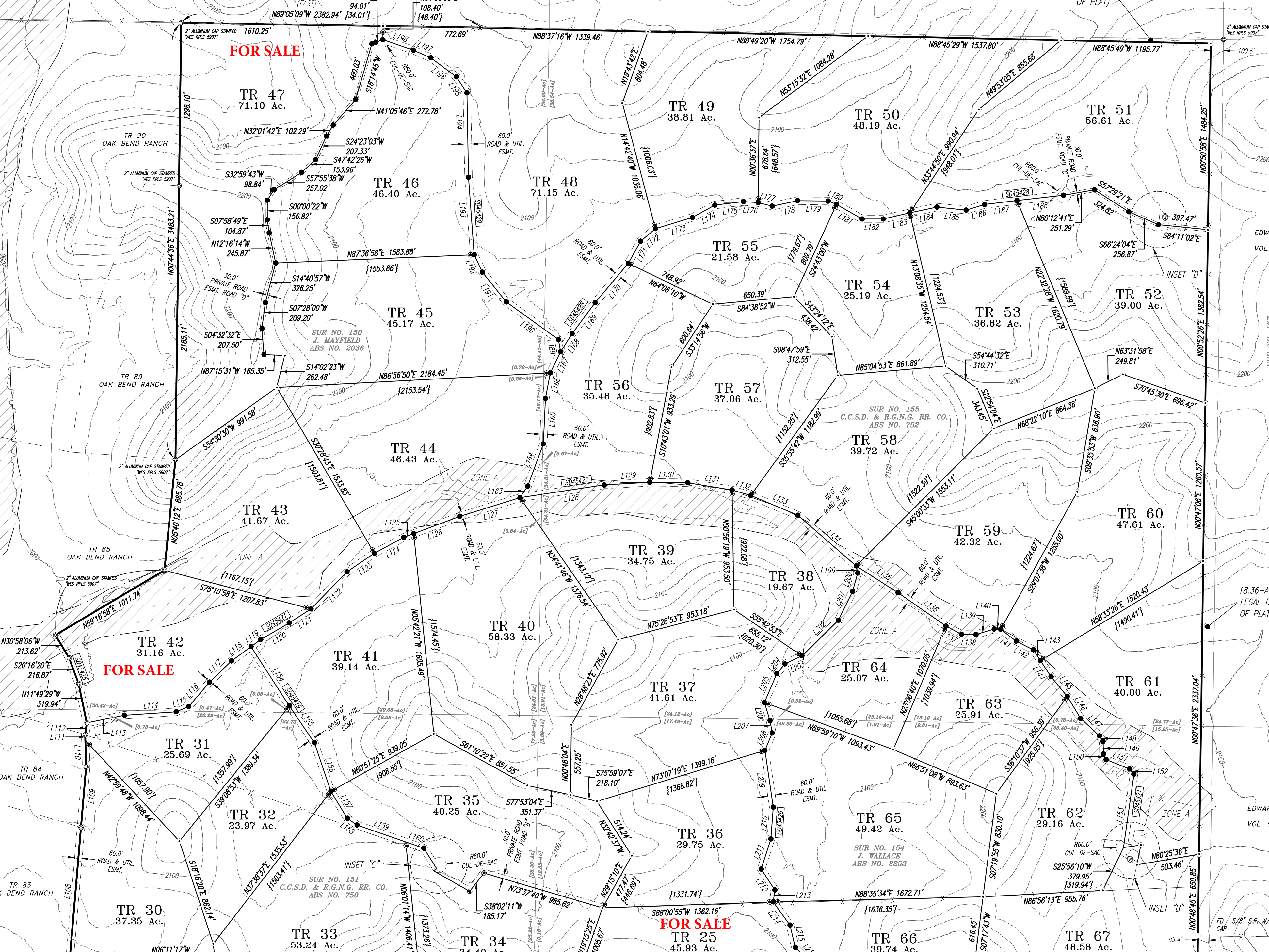
18.36-ACRES BY SEPARATE LEGAL DESCRIPTION (OUTSIDE OF PLAT)

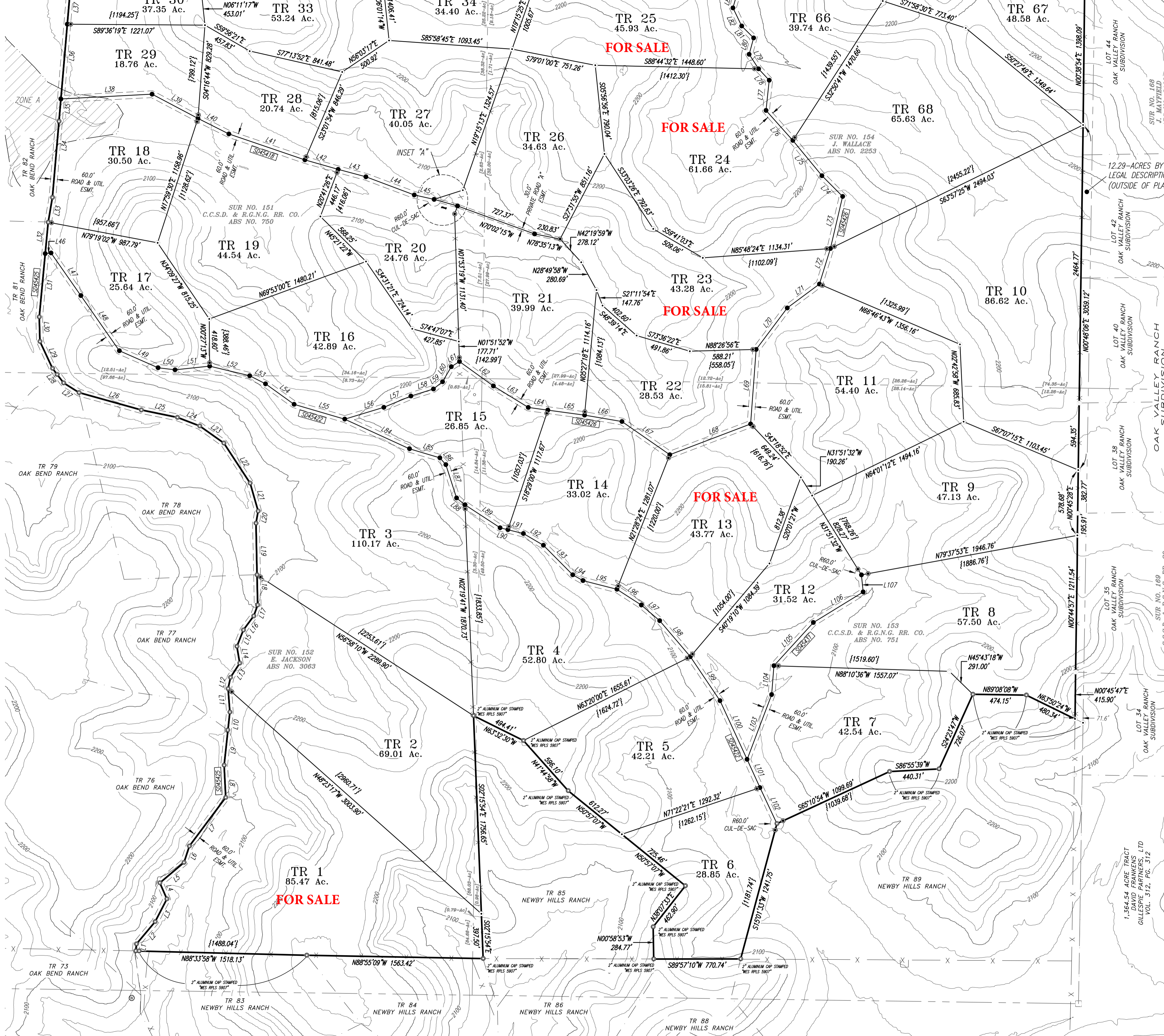
SUR NO. E, JAC... ABS NO.

FOR SALE

FOR SALE

FOR SALE





FOR SALE

FOR SALE

FOR SALE

FOR SALE

FOR SALE

TR 29
18.76 Ac.

TR 28
20.74 Ac.

TR 27
40.05 Ac.

TR 26
34.63 Ac.

TR 25
45.93 Ac.

TR 66
39.74 Ac.

TR 67
48.58 Ac.

TR 68
65.63 Ac.

TR 24
61.66 Ac.

TR 18
30.50 Ac.

TR 19
44.54 Ac.

TR 20
24.76 Ac.

TR 21
39.99 Ac.

TR 23
43.28 Ac.

TR 10
86.62 Ac.

TR 17
25.64 Ac.

TR 16
42.89 Ac.

TR 15
26.85 Ac.

TR 22
28.53 Ac.

TR 11
54.40 Ac.

TR 14
33.02 Ac.

TR 13
43.77 Ac.

TR 9
47.13 Ac.

TR 3
110.17 Ac.

TR 4
52.80 Ac.

TR 12
31.52 Ac.

TR 8
57.50 Ac.

TR 78
OAK BEND RANCH

TR 76
OAK BEND RANCH

TR 1
85.47 Ac.

TR 2
69.01 Ac.

TR 5
42.21 Ac.

TR 7
42.54 Ac.

TR 6
28.85 Ac.

TR 85
NEWBY HILLS RANCH

TR 89
NEWBY HILLS RANCH

TR 73
OAK BEND RANCH

TR 83
NEWBY HILLS RANCH

TR 84
NEWBY HILLS RANCH

TR 86
NEWBY HILLS RANCH

TR 88
NEWBY HILLS RANCH

1.364-54 ACRE TRACT
- DAVID FRANKENS
- GILLESPIE PARTNERS, LTD
VOL. 312, PG. 312